



# Flower Power

## SEW-ALONG

PRESENTED BY  
**HUSQVARNA® VIKING®**  
& **CLASSIC SEWING MAGAZINE**

DESIGNED BY  
**ALICIA WELCHER**, Assistant Editor, *Classic Sewing Magazine*

Welcome to the Flower Power Sew-Along sponsored by *Classic Sewing* magazine and Husqvarna® Viking®! We have sewn our garment on the new Husqvarna® Viking® DESIGNER EPIC™ 2 sewing and embroidery machine and have reflected that within these instructions. However, it doesn't matter which machine you have! Everyone is welcome to participate!



CLASSIC  
**Sewing**  
FOR EVERYDAY & SPECIAL OCCASIONS

**Husqvarna®**  
**VIKING®**



# Flower Power





# Lesson 1 – SUPPLIES, PREPARATION AND CUTTING

## SUPPLIES

All fabrics are from Fabric Finders, Inc.

Kits are available for purchase from the *Classic Sewing* website.

Kit #1: Piqué, rickrack, and piping cord for sleeveless top, pants and skirt. Lining for sleeveless top. Ribbon, rickrack, and button for flower. Thread not included.

Kit #2: Piqué, rickrack, and piping cord for sleeveless top, and either the pants or skirt (not both). Lining for sleeveless top. Ribbon, rickrack, and button for flower. Thread not included.

All Piqué is 58"/60" wide. Lining fabric is 44"/45" wide.

Measurements given below are in yards.

<b>Sleeveless Top</b>	<b>Sizes 4-6</b>	<b>Sizes 8-10</b>
White Piqué, 58/60" wide	5/8	5/8
Hot Pink Piqué, 58"/60" wide	1/4	1/4
*Floral Piqué, 58" wide	1/2	1/2
Optional: Lining	5/8	5/8
Rickrack	1	1 1/4
Baby Piping Cord	2 3/8	2 3/4
<b>Flower Embellishment</b>		
Rickrack	1/4	1/3
**Ribbon (9mm)	1 1/4	1 1/4
Button (7/8")	1	1
<b>Skirt</b>		
Floral Piqué	5/8	3/4
Hot Pink Piqué	1/4	1/4
Optional: Lining	5/8	1 1/3
Elastic (3/4")	1	1
Rickrack	1 1/4	1 1/2
Baby Piping Cord	1 1/4	1 1/2
<b>Pants</b>		
Floral Piqué	3/4	7/8
Hot Pink Piqué	1/4	1/4
Optional: Lining	1 1/8	1 1/4
Elastic (3/4")	1	1
Rickrack	1 1/8	1 1/4
Baby Piping Cord	1 1/8	1 1/4
<b>Cumulative—Sleeveless Top, Skirt &amp; Pants</b>		
Floral Piqué	1 1/2	1 3/4
Hot Pink Piqué	1/2	1/2
Optional: Lining (top only)	5/8	5/8
Optional: Lining (pants & skirt)	1 2/3	2 3/4
Elastic (3/4")	2	2
Rickrack (includes flower stem)	3 1/2	4
Baby Piping Cord	5	5 1/2

\*This will be enough to cut bias for French Bias Piping (neck and arm openings) and bias strips for piping for the top, skirt and pants. If you are buying floral piqué for the pants or skirt, you will have enough left over for the sleeveless top French Bias Piping and piping without this additional purchase.

\*\*Ribbon measurement based on design shown. If a different ribbon flower is used, this measurement may be different.

NOTE: Leaves for flower can be cut from scraps. If the alternate flower version is used, flower petal supplies and leaves can be cut from scraps.

## Thread

Construction thread to blend with fabrics

Construction thread to match button

Invisible thread

## Embellishment

### Ribbon Embroidery

1 1/4 yds of 9mm (3/8") ribbon for flower

260x200 machine-embroidery hoop

Ribbon Embroidery attachment

Lightweight tear-away stabilizer

40wt. embroidery thread to match

ribbon

One 7/8" button for flower center

Medium Rickrack (4-6: 1/4 yd., 8-10: 1/3 yd.)

Ribbon Embroidery Template

### Raw-Edge Appliqué by Machine

Scraps of piqué—5" x 7" floral for flower

and 3" x 5" pink for leaves

Scraps of lining fabric or Osnaburg—

two 5" x 7" and two 3" x 5"

Medium Rickrack (4-6: 1/4 yd., 8-10: 1/3 yd.)

One 7/8" button for flower center

Raw-Edge Appliqué Template

## Notions

Sewline glue pen

Water-soluble fabric marker

Sulky KK2000 temporary spray adhesive (optional)

TenSisters Piping Tool or other piping trimming tool

General sewing and embroidery supplies

## Extra Sewing Machine Feet

Mini Piping foot

Edge-Joining foot for IDF

Edge-Stitching foot for IDF

Open-Toe foot for IDF

NOTE: IDF is Integrated Dual Feed

## Lesson 1 – SUPPLIES, PREPARATION AND CUTTING

### PATTERN PREPARATION

1. Print the patterns using the Actual Size setting. Print page 1 first and check the 1" scale to be sure that you are printing actual size, then print the rest of the pages.

2. Tape the pages together by aligning the red dots at the outer edge of each page. A lightbox can be very helpful. When taping, only tape within the pattern lines. Do not waste tape by taping in areas that will be cut away.

3. Cut the patterns out. You may want to create two copies of the Sleeveless Top Front and tape them together at the fold line to achieve one full top front pattern.

### CUTTING

#### Sleeveless Top

From white piqué, cut the following:

- One Sleeveless Top Back
- One Block, 4" wider and taller than the full top front

From lining fabric (if using), cut the following:

- One Sleeveless Top Back
- One Sleeveless Top Front

From pink piqué, cut the following:

- One Sleeveless Top Front Band
- One Sleeveless Top Back Band

#### A-Line Skirt

From floral piqué and the lining fabric (if using), cut the following:

- One Skirt Front
- One Skirt Back

From pink piqué, cut the following:

- One Skirt Front Band
- One Skirt Back Band

#### Capri Pants

From floral piqué and the lining fabric (if using), cut the following:

- Two Pants Backs
- Two Pants Fronts

From the pink piqué, cut the following:

- Two Pants Bands

NOTE: *The bias strips for French bias piping (neck and arm opening) and the bias strips for piping (between the rick-rack and the hem bands) will be cut when the piping is created.*



*Ribbon Embroidery*



*Raw-Edge Appliqué by Machine*

### MARKING

The sleeveless top features a ribbon embroidery using the exclusive new Ribbon Embroidery attachment from Husqvarna Viking. For those of you who do not have the ability to use ribbon embroidery or even machine embroidery, we have provided an alternate raw-edge appliqué flower and leaves that you can sew. We have provided templates for both options.

1. Trace one shirt front centered on the block of white piqué using a temporary fabric marker.

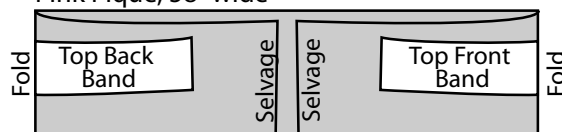
2. Using the appropriate template, trace the stem, leaves and embroidery/appliqué center onto the block.



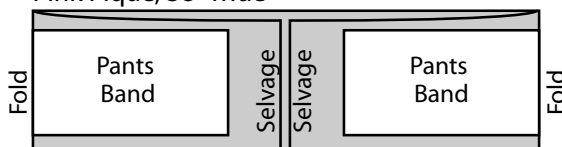
Top, All sizes  
White Piqué, 58" wide



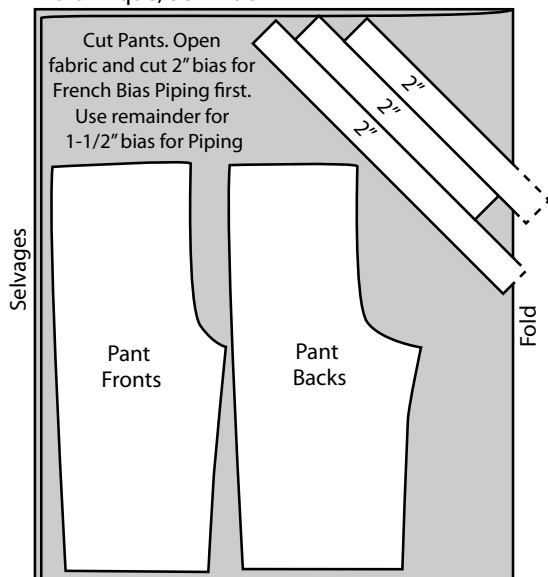
Top Bands, All sizes  
Pink Piqué, 58" wide



Pant Bands, All sizes  
Pink Piqué, 58" wide

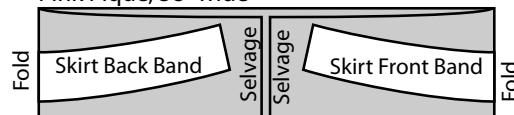


Floral Piqué, 58" wide

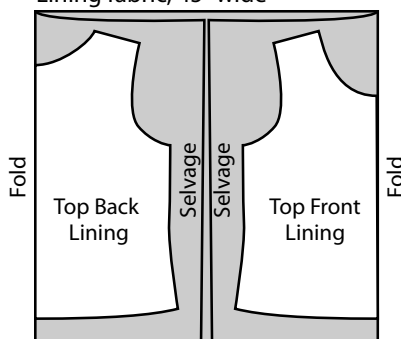


**Flower Power**  
© 2020 Classic Sewing Magazine  
INDIVIDUAL CUTTING GUIDES  
(see directions for yardages)

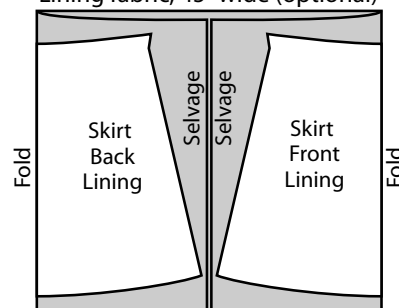
Skirt Bands, All sizes  
Pink Piqué, 58" wide



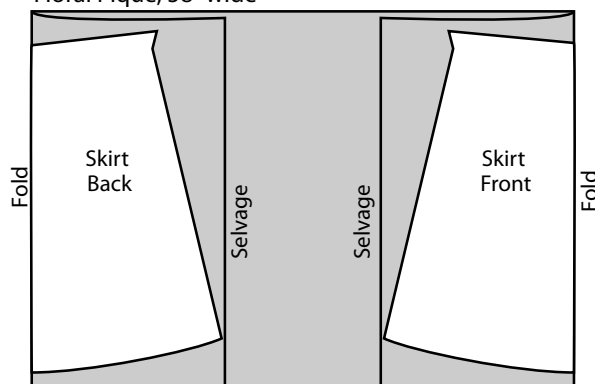
Top Lining, All sizes  
Lining fabric, 45" wide



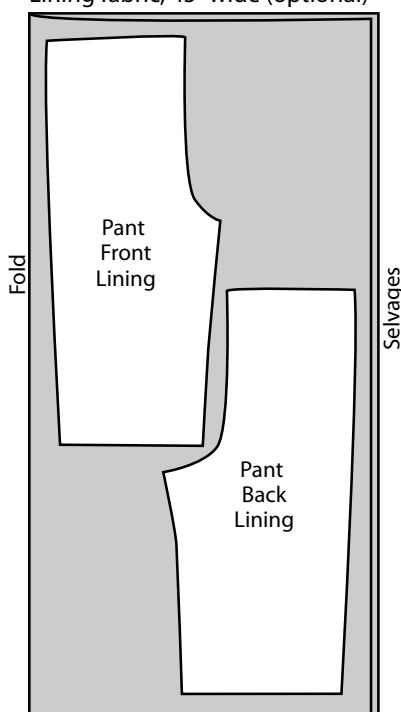
Skirt Lining, Sizes 4-6  
Lining fabric, 45" wide (optional)



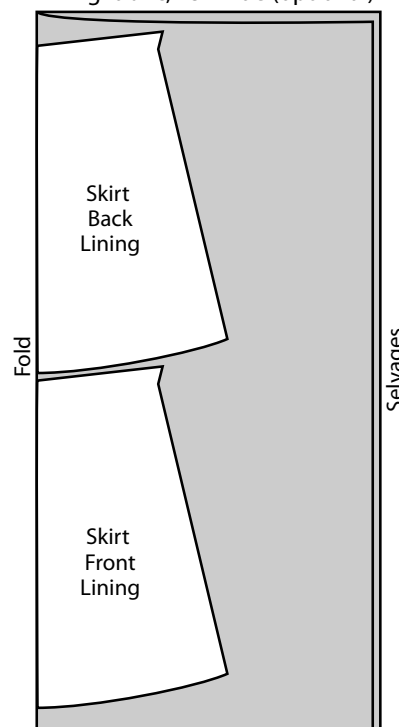
Skirt, All sizes  
Floral Piqué, 58" wide



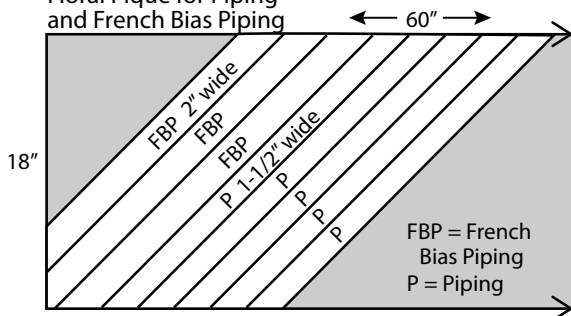
Pants Lining, All sizes  
Lining fabric, 45" wide (optional)



Skirt Lining, Sizes 8-10  
Lining fabric, 45" wide (optional)

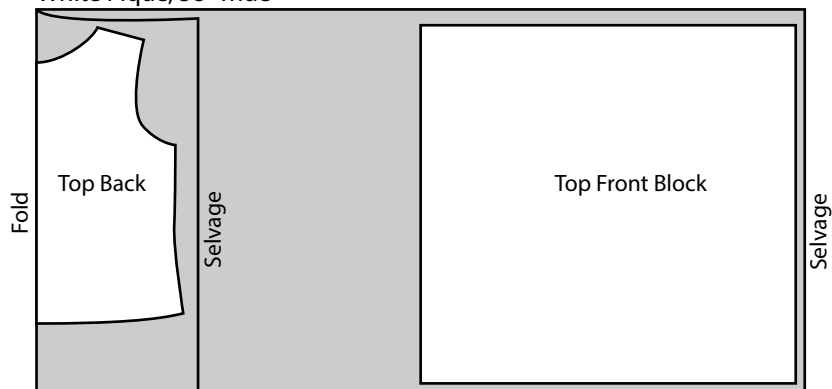


Extra 1/2 yard of  
Floral Piqué for Piping  
and French Bias Piping





Top, All sizes  
White Piqué, 58" wide



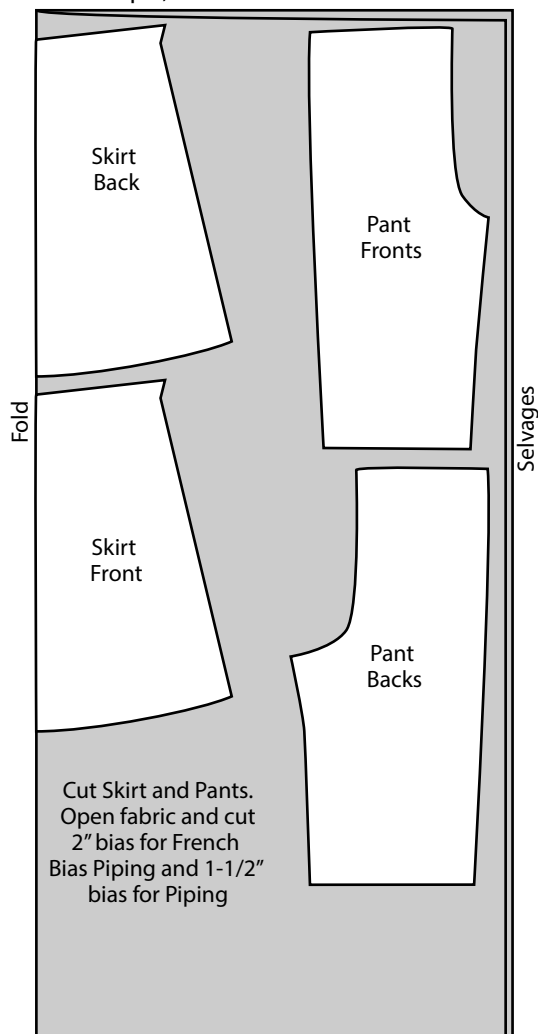
## Flower Power

© 2020 Classic Sewing Magazine

### CUMULATIVE CUTTING GUIDES

(see directions for yardages)

Skirt, Pants, French Bias Piping and Piping  
Floral Piqué, 58" wide



Top, Skirt, Pants Bands  
1/2 yard Pink Piqué, 58" wide

